



Harness pleasant natural light  
**and make those special places even more so.**

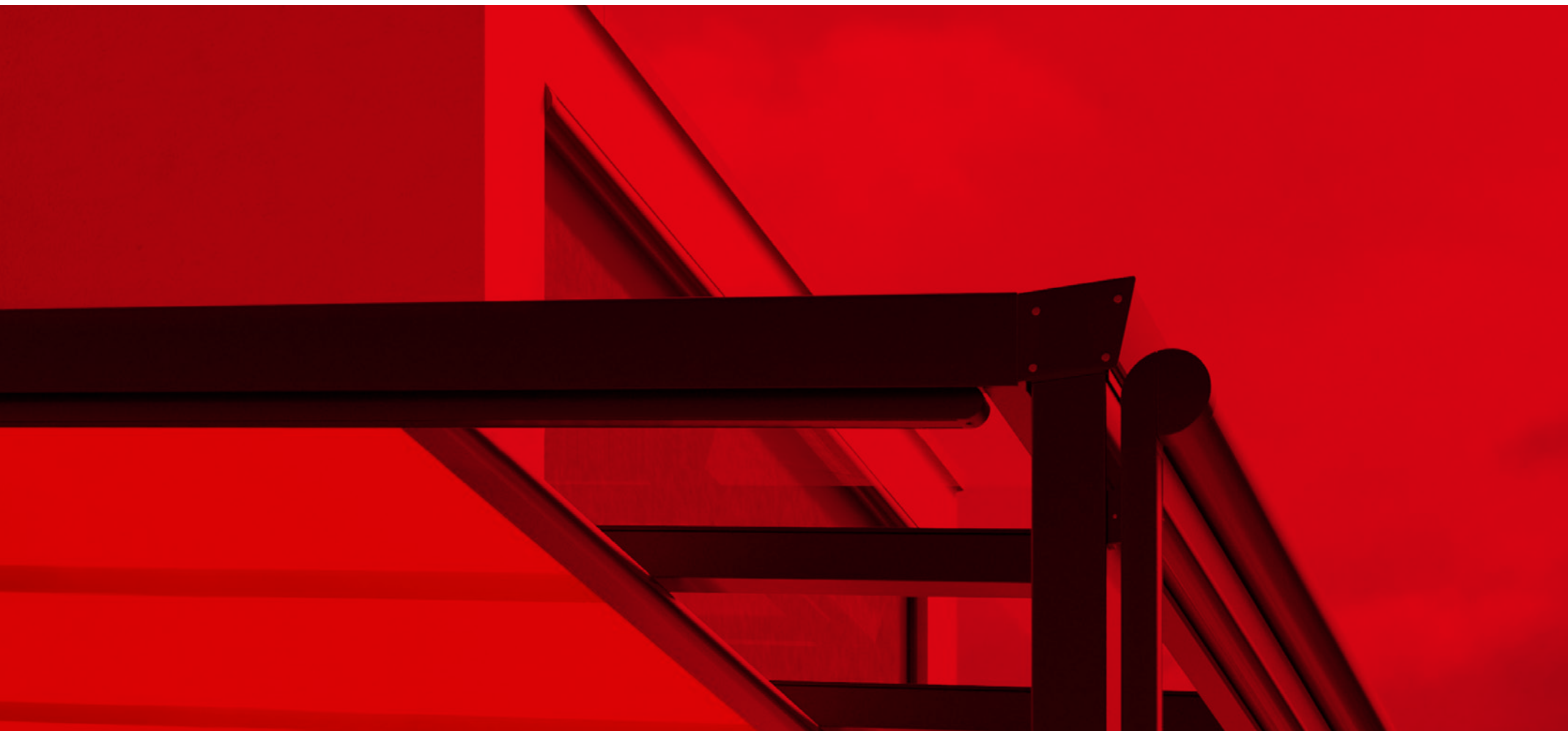
Designer awnings for conservatories, glass rooms and glass canopies

**markilux**

The best under the sun

The background is a vibrant red color. It features several dark red, almost black, geometric shapes and lines that create a sense of depth and shadow, resembling architectural elements like moldings or beams. The text is centered in the upper half of the image.

Put only the best between you and the sun.  
Create the most alluring shade in the world.







There is always a clear line to the design of our awnings which usually ends in a red dot.

#### Enjoying feel-good temperatures

Unobstructed views into the garden in a protected environment: conservatories and covered patios offer the best of both the indoors and the outdoors. markilux designer awnings protect conservatories and glass canopies from strong sunlight and high temperatures and allow you to enjoy those precious moments at any time of the day. Installed either above or below the glass, they ensure a comfortable climate and reliable protection from glare. The high-grade textile shading systems from markilux are both elegant and robust. Right down the line. Award-winning. Good.

markilux designer awnings have received a multitude of awards:



reddot design award winner 2017

| Brand

| Website

| e.g. the markilux 8800/870

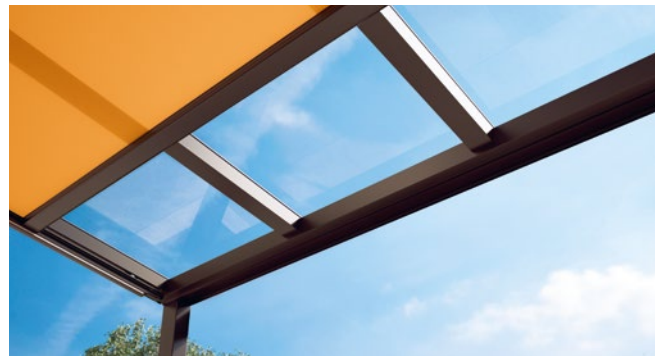
# Reduced to the essence: Free. Time. Quality – Made in Germany.

For nearly 50 years, markilux has been developing and making top-quality sun protection solutions. markilux designer awnings are characterised by their first-rate, multi-award-winning designs and innovative technology. The production of awning and cover under one roof – is the essence of what markilux “Made in Germany” represents, with the aim of making an al fresco lifestyle comfortable, convenient and enjoyable. With markilux, you can turn your favourite spot outdoors into something extra special. **Put only the best between you and the sun. Create the most alluring shade in the world.**



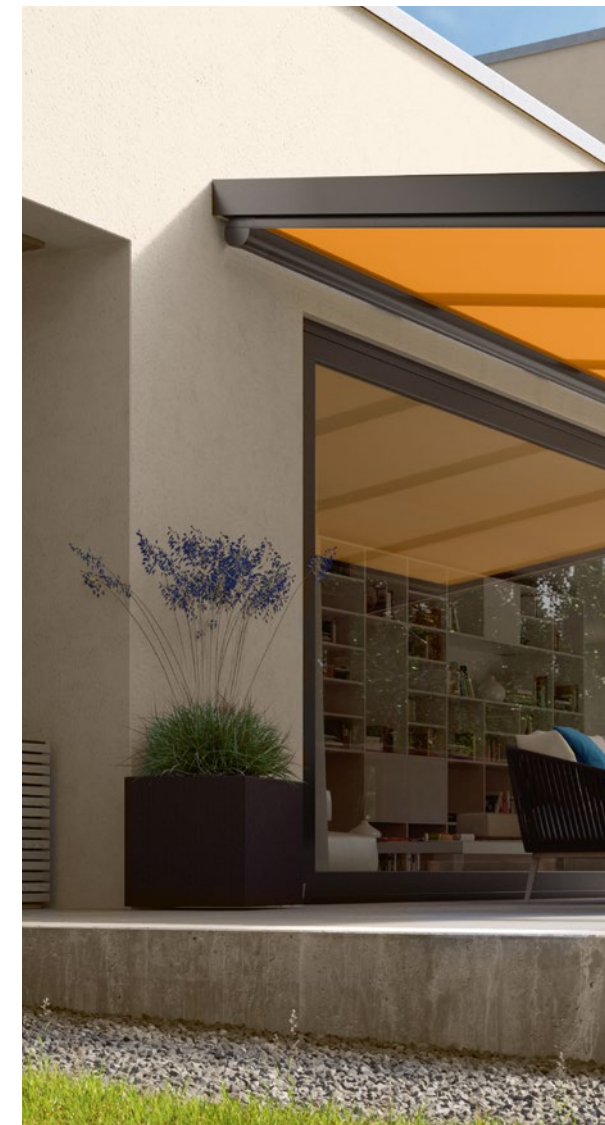
## markilux quality

High-grade materials and our comprehensive quality management system ensure that each awning will have a long service life. As a company, we are certified in compliance with DIN EN ISO 9001.



## markilux functionality

markilux combines innovative technologies and smart solutions to create high-end products. With the variety of accessories and operating methods available, you can enhance your markilux designer awning to suit your own requirements.



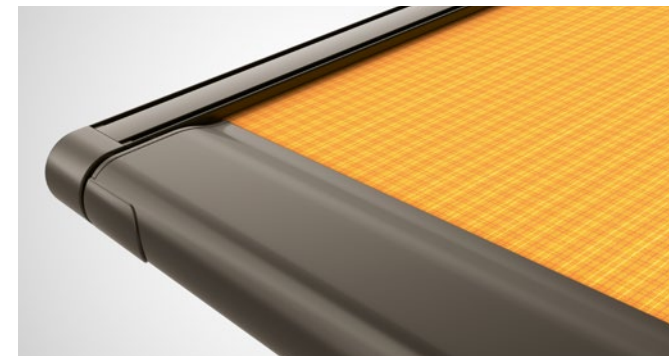
# markilux



## markilux design

It is the perfect combination of form and function that turns a bit of shade into a markilux designer awning. To achieve this, we rely on the long-term experience of our internal development team in cooperation with external designers.

Member of  **Rat für Formgebung**  
German Design Council



## markilux service

The combination of a brand product, expert advice and professional installation makes your solution perfect. Qualified markilux specialist dealers provide a comprehensive service and a personal point of contact in your area.



#### Textile ambience

markilux offers more than 250 timeless beautiful patterns in the highest quality – the decision is yours.



#### Excellent design

markilux has the awning that matches your home both from the outside and the inside.





## Create your own customised space to relax in.

### Your home. Your markilux.

Would you like to shade your conservatory in a stylish manner? Are you looking for an awning for your glass canopy, which unites impressive functionality and attractive design? Then choose your favourite cover from more than 250 timelessly attractive patterns and create the markilux model that perfectly meets your requirements from innumerable combination possibilities. And add further highlights from the broad range of markilux extras. With lighting modules and infrared heaters, as well as smart control technology, you can create comfortable, pleasant surroundings which you can enjoy all year round.



### Perfect solutions

Not possible? Of course it is. Together with our specialist dealer you will find the perfect solution for any situation.

Crystal clear:  
the perfect protection  
against sun and heat.



Above glass and underglass awnings



**mx\_8800**

Excellent solar protection for up to 36 m<sup>2</sup> with only one cover.  
Even larger glass surfaces can easily be shaded with a coupled awning.

## Above glass conservatory awnings. Once on top. Always on top.

### Enjoy life in your conservatory even on the hottest of days

A markilux awning fitted above the glass reflects glaring sunlight, ultraviolet light as well as a considerable proportion of heat radiation and at the same time immerses your conservatory in natural daylight. Heat remains outside while you can properly enjoy being inside. Whether small or large glass areas, classic or hipped roofs – enjoy pleasant temperatures and create your very own dream conservatory.



### mx\_8850

Perfect for hipped roofs: the lateral guide tracks can be indented by up to 100 cm.



### Excellent design

Elegant and functional. The fully closed cassettes of the markilux 8800 and 8850 protect the cover in wind and weather.





#### MX\_770

Exceptionally compact at only 125 × 125 mm, the square full cassette completely protects the awning cover.



#### MX\_870

With a diameter of just 130 mm, the round cassette harmoniously nestles against the conservatory and provides all-round protection to the retracted cover.



#### Square. Practical. Unobtrusive.

Both the square markilux 770 awning for installation on top of a glass surface and its round counterpart are very quiet. Noise-reducing closing guides ensure the awning retracts quietly.

MX\_770 | 870

Above glass conservatory awnings.  
Big impact. Size compact.



reddot design award  
winner 2017

#### A round matter

Using the markilux 770 or 870 you can shade up to 450 × 400 cm in a stylish manner and enjoy the comfort and quality of markilux for many years to come.



**MX\_779**

Compact square full cassette for those who prefer clean lines in their designs.



**MX\_879**

Attractive round full cassette for those who love flowing curves.





## Underglass awnings for glass canopies. Cosy and intimate. Under glass. A brilliant solution.

### In people's minds and above their heads

Spend the day outside in your own garden below a protective canopy. markilux designer awnings promise the best protection from too much sun and help create your very own cosy outdoor area. The cover extends under the glass canopy and is protected against dirt, wind and weather. All markilux underglass awnings impress with their compact, enclosed cassettes that blend harmoniously into the structure. Numerous lighting options are available to allow you to perfect the ambience in the evening.



### A shadeplus complements your markilux underglass awning

The ideal addition to the markilux shading solution for glass canopies – completely in line with the clear design approach of markilux “Made in Germany”, it is integrated into the front profile of the underglass awning.



reddot design award  
winner 2017



**LED Line attached to the guide tracks**

Energy efficient, stylish and, like all markilux lighting modules, conveniently dimmable by remote control. If desired, also available in the light bar.



**LED Spots attached to the light bar**

Put your favourite spot skilfully in the limelight and enjoy the evening in a pleasantly lit atmosphere. They can be dimmed and pivoted. In the markilux 779, they can also be mounted under the cassette.





markilux 779 with LED Line in the cassette  
Pleasant, ambient lighting in incomparable markilux design.



Exquisite fabrics  
in the most beautiful of shades.



Awning covers | Frame colours



**markilux visutex collection 50/4/me**

Inspiration drawn from fashion, architecture, colour and naturally occurring special effects. 50 innovative fabrics conjure up your very own awning heaven in the tried and tested qualities sunsilk and sunvas – available exclusively from markilux.



## markilux awning covers.

The most beautiful fabric between heaven and earth.

### Our unique covers help to create a special ambience

The colour and quality of the awning fabric are what turn the ambience on your patio into something special. Depending on the brightness and hue, colour distinction, patterns and textures succeed in creating the desired effect. As a leading manufacturer of high-grade awning covers with 100 years of experience in the design and production of textiles, markilux offers an unparalleled variety. The markilux textile design team is constantly developing new patterns in line with the latest trends, which are nevertheless characterised by their timeless appeal. Among the more than 250 patterns in thematically coordinated colour families, you are certain to find your very own and most beautiful fabric between heaven and earth.



### markilux awning cover finder

The most beautiful fabric for your designer awning can be found amongst the more than 250 cover patterns at the showroom of your markilux specialist dealer and at [markilux.com](https://www.markilux.com)



| markilux visutex



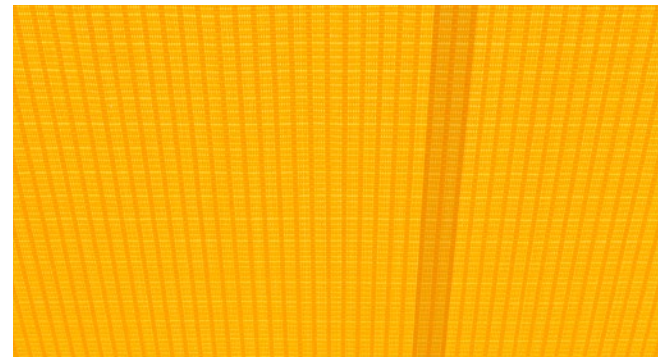
| markilux perfortex



### Functionality can be so beautiful

During the production of our awning fabrics, we leave nothing to chance. We add a final finishing flourish to the fabric with a special formula developed in house. This finish gives our awning covers incredible longevity and resistance to rain, light and fluctuations in temperature. Certified in accordance with Oeko-Tex standard 100, markilux awning covers are guaranteed free from harmful dyes and chemicals.

With an Ultraviolet Protection Factor (UPF) of 50+, all solid markilux awning covers made from sunsilk or sunvas offer the highest possible degree of UV protection for fabrics. Your skin's own protection factor is enhanced by a factor of more than 50. This allows you to enjoy sunny days for longer, without risk.



#### Self-cleaning effect

Water droplets pick up dirt particles and run off the awning cover taking the dirt with them (the awning must be set at a pitch of at least 14 degrees), ensuring you can enjoy your beautiful fabric for a long time to come.

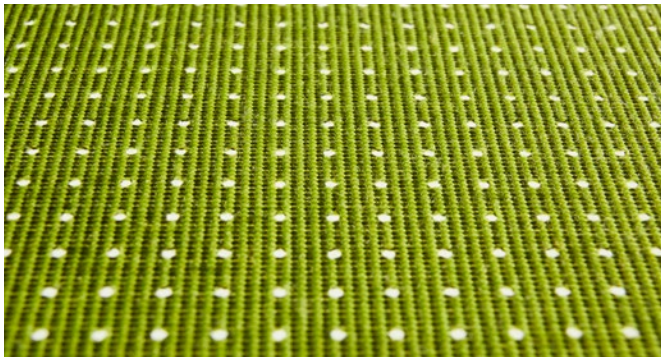
#### Bonded awning covers

Panel joints bonded together ultrasonically ensure a consistent, unobtrusive appearance. The excellent resistance to water, light and fluctuations in temperature ensures that the service life of the cover is extended substantially.

#### Light and weather resistance and resistance to fading

High-tech yarns dyed right to the core and a high-grade finish developed in house guarantee the most stunning shade in which to relax.





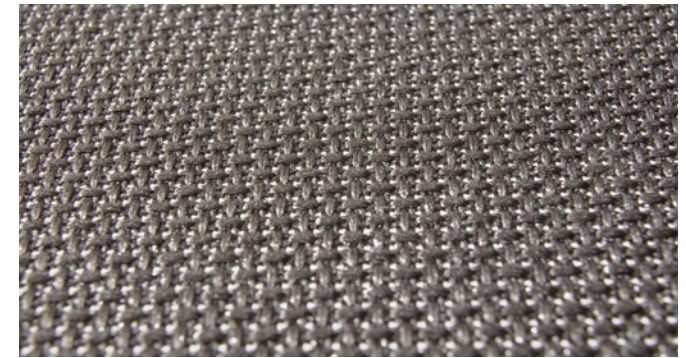
**transolair**

The sunvas fabric with special perforation technique stands for impressive transparency as well as good light and air permeability. It guarantees an exchange of air between the cover and the glass, thus effectively reducing the build-up of heat.



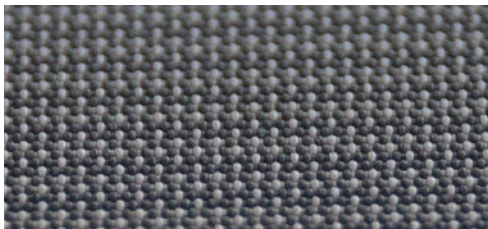
**perfotex**

Ideal for conservatories. Gaps in the warp yarns woven into the fabric make the material permeable to both air and water.



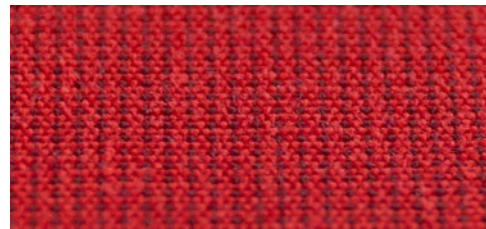
**vuscreen ALU**

Solar protection with added functionality. The aluminium particles on the high-tech fibres ensure a better room climate with a good view outside.



**sunsilk**

Brilliant vividness. Silky smooth surface. Unique luminosity.



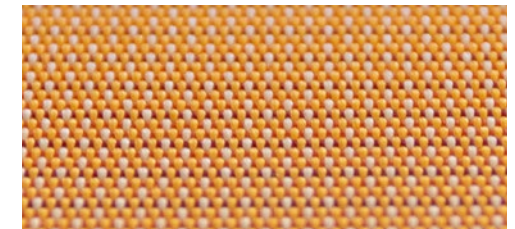
**sunvas**

Soft glow. Textile-like to the touch. Textile character and natural appearance.



**perla**

The highly water-repellent sunvas fabric provides optimum protection against both sun and rain.



**perla FR**

The flame-resistant and highly water-repellent sunsilk fabric complies with strict fire retardancy regulations.



Traffic white

RAL 9016



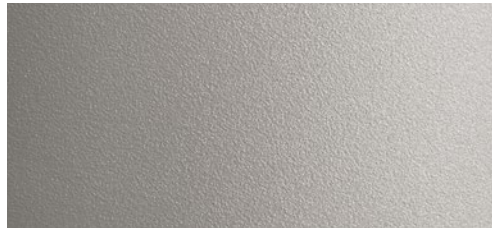
Off-white textured finish

5233



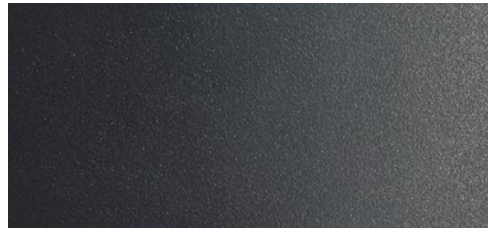
Metallic aluminium

RAL 9006



Stone grey metallic

5215



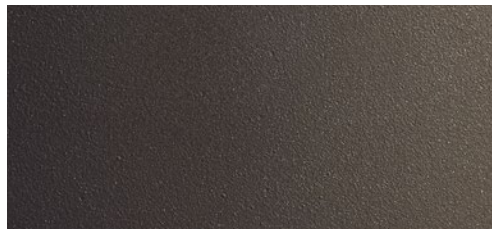
Anthracite metallic

5204



Grey brown

similar to RAL 8019



Havana brown textured finish

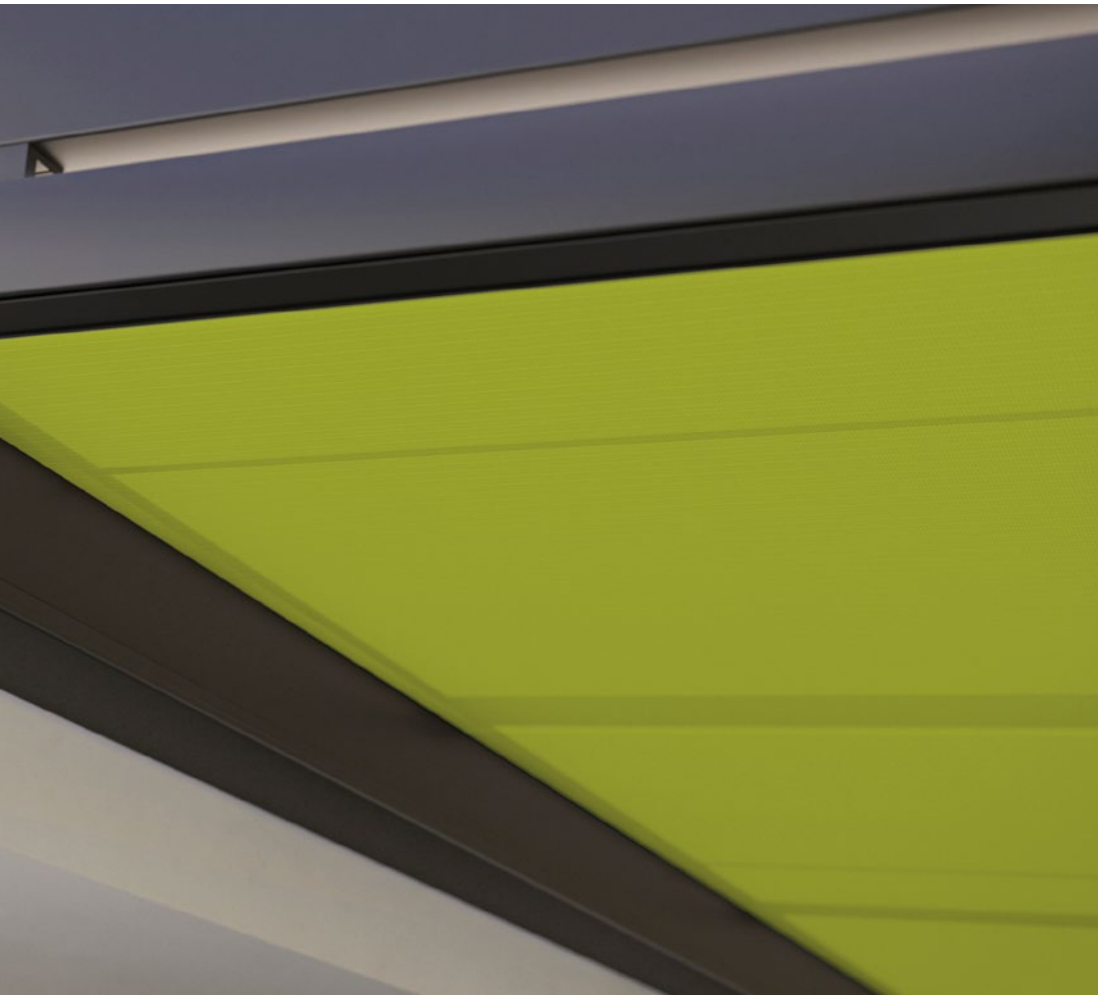
5229



RAL colour of your choice

© RAL Bonn 2020





Sounds perfect.  
Looks better.  
**Tone in tone.**

**markilux awning colours**

The awning frame colour complements and enhances the colour of the fabric and creates a perfect link to the architectural surroundings. From a variety of shades of white through to the timelessly elegant anthracite, a broad range of colours is available to you. And if you want to create your own particular colour scheme? No problem! We will gladly manufacture your dream awning in your own personal shade.

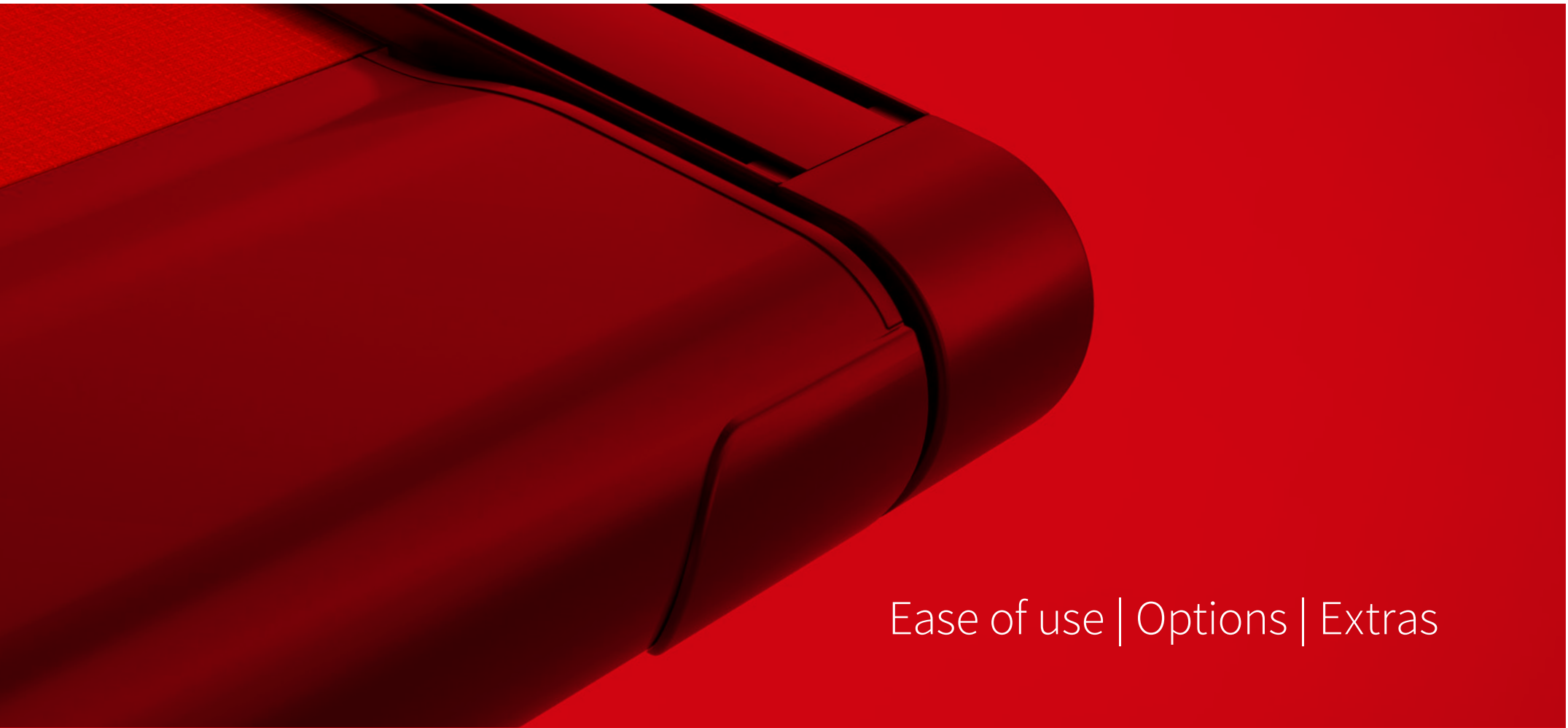
Our high-grade powder coating finish is guaranteed for any awning colour you choose.

**Matching every architectural style and customer demand**

All markilux awning colours are available without surcharge. Non-standard colours can be selected on request.

Beauty lies not in size  
but in attention to detail.

markilux



Ease of use | Options | Extras

# markilux ease of use.

Make it easy on yourself,  
and convenient.

## Meeting the highest demands and any weather conditions

The choice is yours: manual operation, hard-wired motor or radio-controlled motor with remote control are all possible on most models. As an extra option, light, wind and rain sensors can provide intelligent control of your markilux designer awning or blind. You can even operate the system while you are away via smartphone or tablet.

Your markilux specialist dealer is at your disposal should you have any queries regarding the operation of your markilux and will provide you with details on how you can connect several awnings and operate them all at the touch of a button.



# markilux



### You too will be impressed

markilux offers a wide range of stylish and intelligent solutions which will put your home in the best light. Detailed information and professional advice can be acquired from your local markilux specialist dealer or at [markilux.com](https://www.markilux.com)



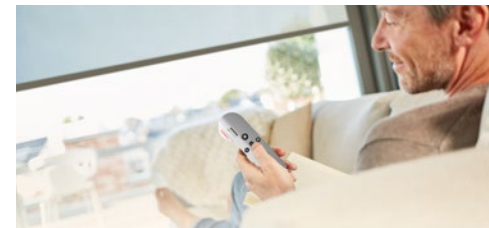
### Home automation

Easily control your designer awning by smartphone or tablet – even when on the move. The smart control function using iO technology via the app makes it possible.



### Intelligent control

With light, wind and rain sensors, your markilux system will react to any change in the weather. In sunny conditions the awnings will extend automatically, and in wind and rain they will retract.



### markilux remote control

Perfect protection from the sun, inquisitive glances and glare, comfortably at the touch of a button.

## markilux options and accessories. That little bit more.



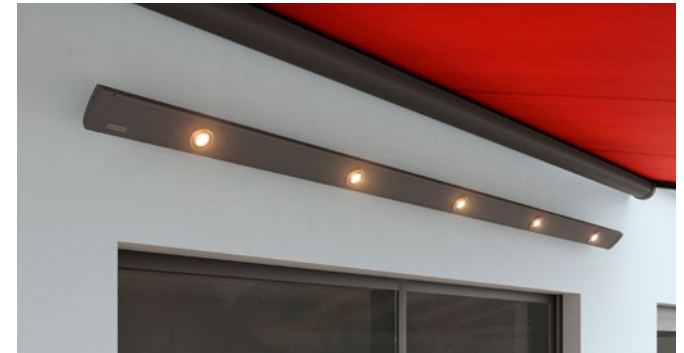
### The markilux shadeplus

The ideal addition to the shading options for glass canopies, integrated into the front profile of the markilux 779/879.



### markilux infrared heater

Feel the warmth in an instant and enjoy the evening outside for even longer. In a protected housing. Energy efficient and with a long service life. 2500 Watt, dimmable in three stages.



### markilux LED Spotline

Turn night into day. The elegant light bar in a powder-coated aluminium housing, that can be fitted almost anywhere. The LED Spots can be tilted and swivelled. Available in two sizes: 180 cm with 3 spotlights and 300 cm with 5 spotlights.





**Side screen markilux 790**

Protects against low-lying sun and wind from the side, as well as guarding against prying eyes. Maximum height 250 cm. Maximum extension 450 cm.



**Coupled awning**

An extensive range of brackets allows several units to be installed next to one another – creating XXL shading solutions.



**Vertical designer roller blinds**

Simply shield yourself from inquisitive glances and low-lying sun. Sit protected from the wind and rain. Enjoy the warmth of the day for longer. Adding vertical designer roller blinds from markilux makes your outdoor room perfect – and more private.



**silentec motor**

Deafeningly quiet. In the markilux 8800, this special motor ensures particularly quiet operation.



**Flush front profile**

Completely extended it finishes flush with the guide tracks.



**Decorative covers for guide track brackets**

improve the overall appearance.

Availability depends on the model

# markilux options and accessories.

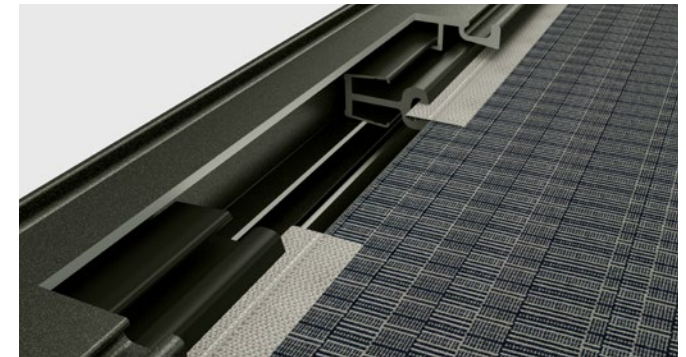
More freedom. More free space.



### Perfect cover fit

High cover tension is achieved by virtue of two concealed special gas pistons operating independently of one another in the front profile.





**markilux tracfix**

One of the many sophisticated features offered by markilux: the lateral cover guidance system without a gap between the awning / blind cover and the guide track. Gives an overall better appearance and improves the wind stability.

**markilux panoramic window**

Wouldn't you like to be able to sit outside below your patio roof, protected from wind and weather, and still be able to enjoy an unobstructed view outside? If so, in the markilux 776 / 876 with tracfix, we can offer you the markilux panoramic window. Maximum dimensions 600 × 300 cm. Maximum height of the panoramic window approx. 135 cm.

Availability depends on the model



A clear overview  
opening up exciting prospects.



Technical details

# Above glass conservatory awnings

markilux 8800  
Page 12



markilux 8850  
Page 13



markilux 770  
Page 14



markilux 870  
Page 14



Max. width × extension	700 × 450 cm / 500 × 700 cm 600 × 450 cm / 500 × 600 cm (tracfix)	650 × 400 cm 500 × 500 cm	450 × 400 cm	450 × 400 cm
Cassette dimensions	Ø 187 mm	Ø 187 mm	125 × 125 mm	Ø 130 mm
Operation optional	Hard-wired motor + radio-controlled motor* + silentec motor	Hard-wired motor + radio-controlled motor*	Hard-wired motor + radio-controlled motor*	Hard-wired motor + radio-controlled motor*
Cover guidance optional	Guide tracks tracfix	Guide tracks	Guide tracks (tracfix)	Guide tracks (tracfix)
Cover tension	Gas pistons	Gas pistons	Gas pistons	Gas pistons
Wind resistance class	3	2	3	3
equivalent of Beaufort force → wind speed	6 → 38 – 48 km/h 6 → 24 – 30 mph	5 → 28 – 37 km/h 5 → 17 – 23 mph	6 → 38 – 48 km/h 6 → 24 – 30 mph	6 → 38 – 48 km/h 6 → 24 – 30 mph
Options**	+ coupled awning			

\* Remote control, smart (app) or intelligent control possible

\*\* Some options cannot be combined

# Underglass awnings for glass canopies

markilux 779

Page 16



600 × 450 cm / 400 × 600 cm  
600 × 400 cm (tracfix)

125 × 125 mm

#### Manual operation

- + hard-wired motor
- + radio-controlled motor\*

#### Guide tracks

tracfix

#### Gas pistons

2 – 3 depending on size / 3 with tracfix

5 – 6 → 28 – 48 km/h

5 – 6 → 17 – 30 mph

- + LED Spots  
attached to the cassette  
and/or to the light bar
- + LED Line in the cassette,  
attached to the guide tracks  
and/or in the light bar
- + shadeplus / drop valance

markilux 879

Page 16



600 × 450 cm / 400 × 600 cm  
600 × 400 cm (tracfix)

Ø 130 mm

#### Manual operation

- + hard-wired motor
- + radio-controlled motor\*

#### Guide tracks

tracfix

#### Gas pistons

2 – 3 depending on size / 3 with tracfix

5 – 6 → 28 – 48 km/h

5 – 6 → 17 – 30 mph

- + LED Spots  
attached to the light bar
- + LED Line  
attached to the guide tracks  
and/or in the light bar
- + shadeplus / drop valance

markilux



**Talk to a dealer now about the options**

Marvel at the possibilities. Allow yourself to be inspired. Detailed information is available from your local markilux specialist dealer and at [markilux.com](http://markilux.com)

**The best under the sun. Create the most alluring shade in the world.**

markilux designer awnings are a symbiosis of innovative technology and the ultimate in quality and have received both acclaim and multiple awards. Ideas, detailed information, professional advice and all the exquisite markilux awning fabric patterns can be found in your specialist dealer's showroom and at [markilux.com](http://markilux.com)